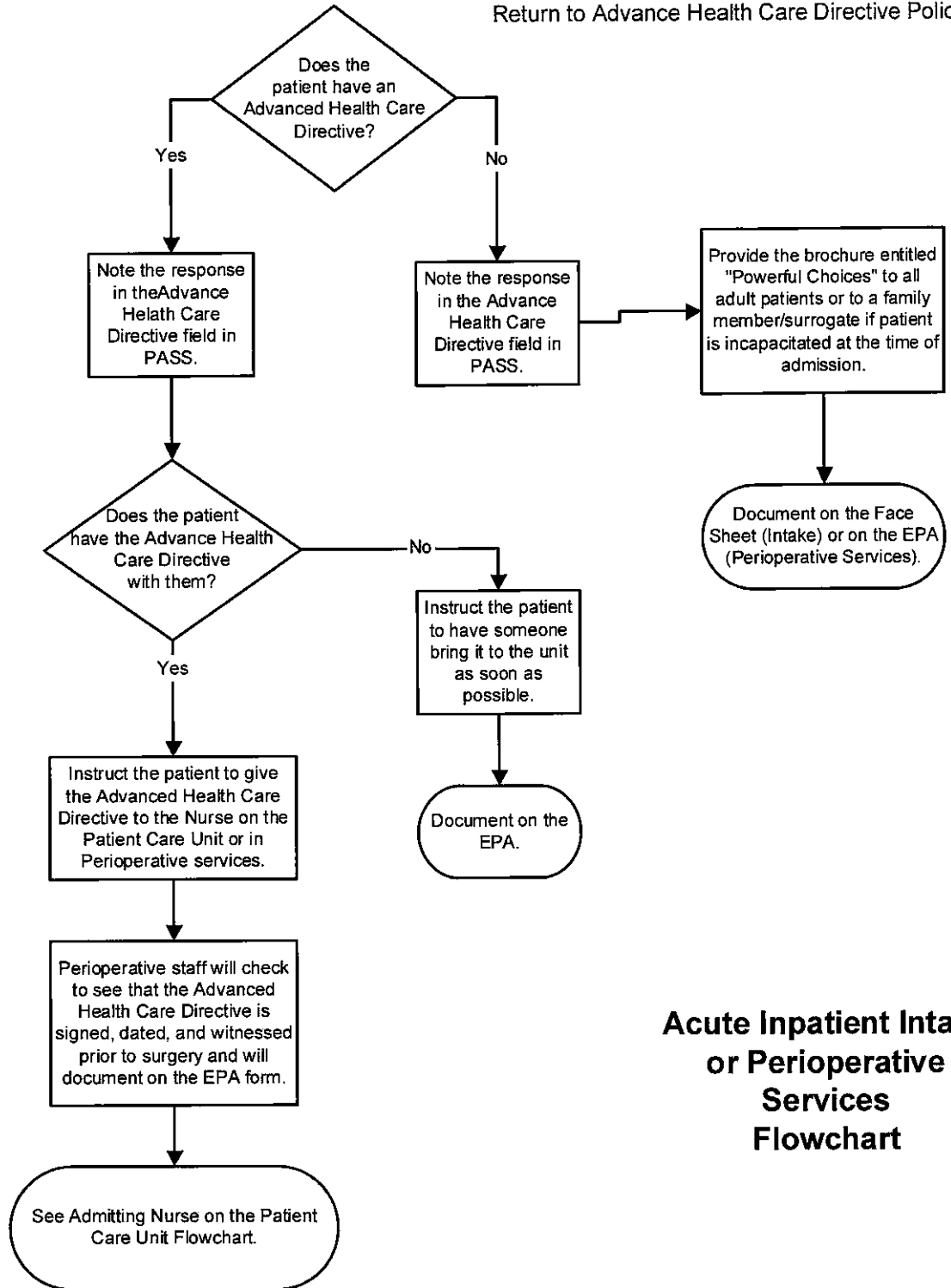
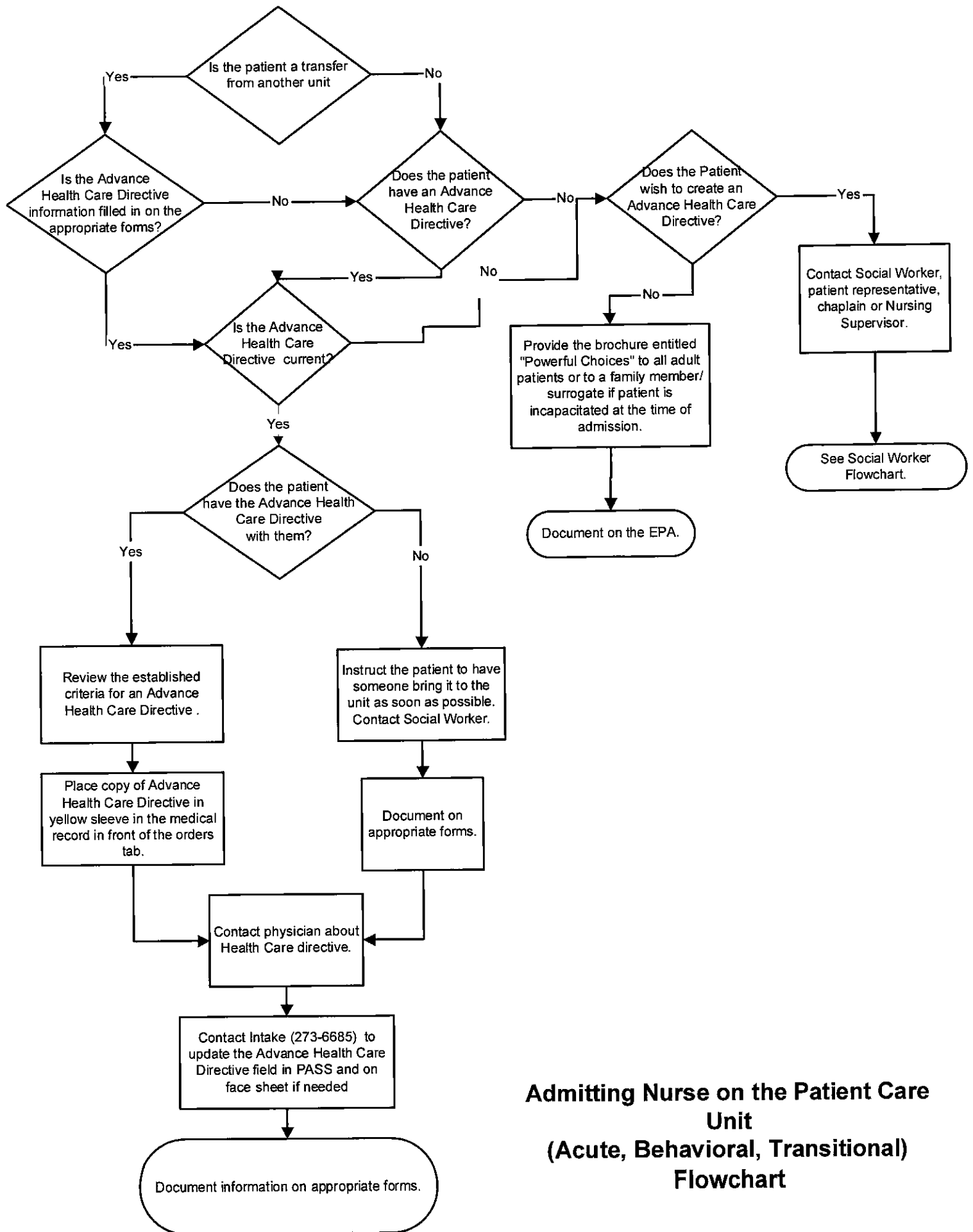


Appendix B: Advance Health Care Directive Flowcharts

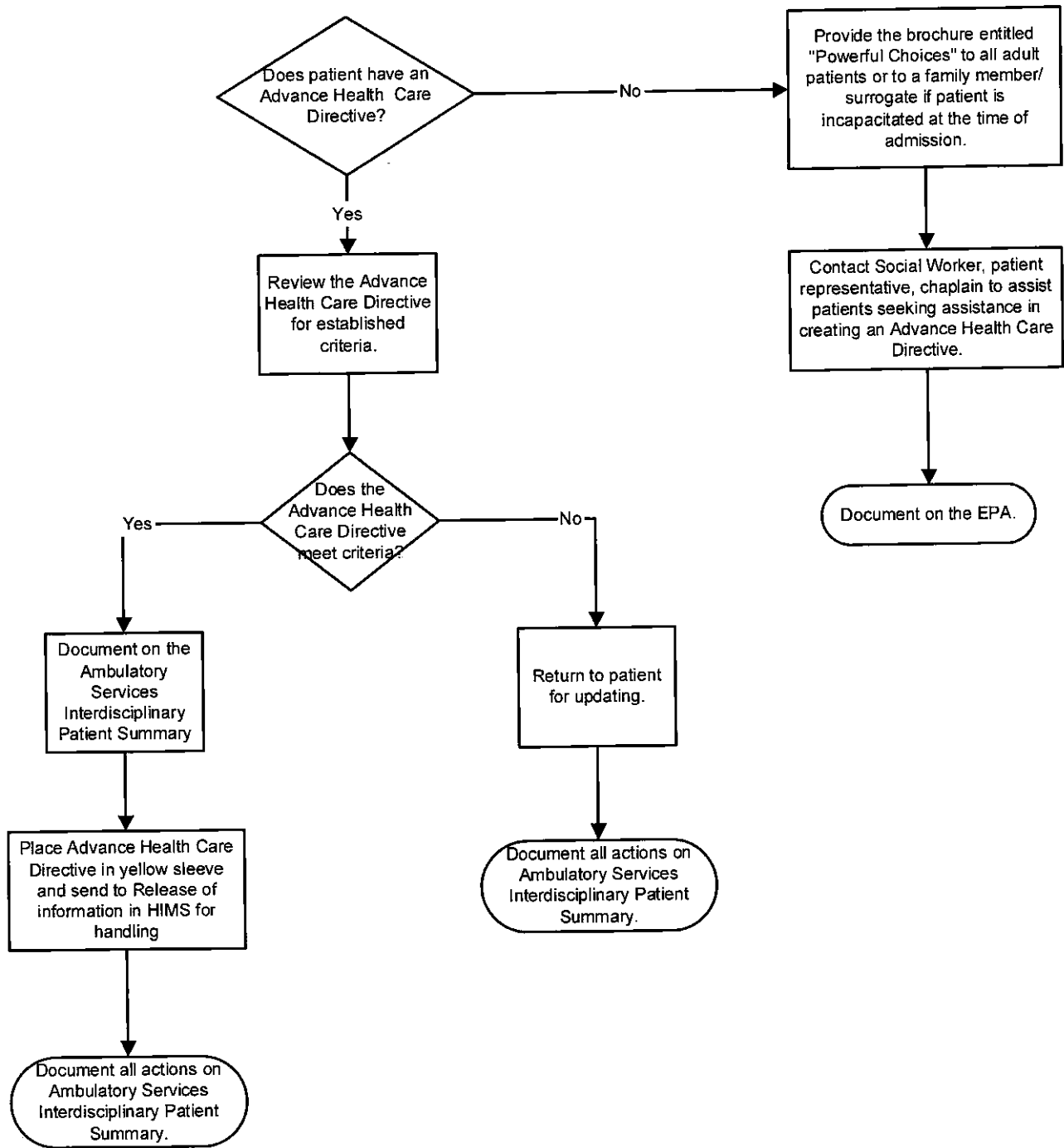
Return to Advance Health Care Directive Policy



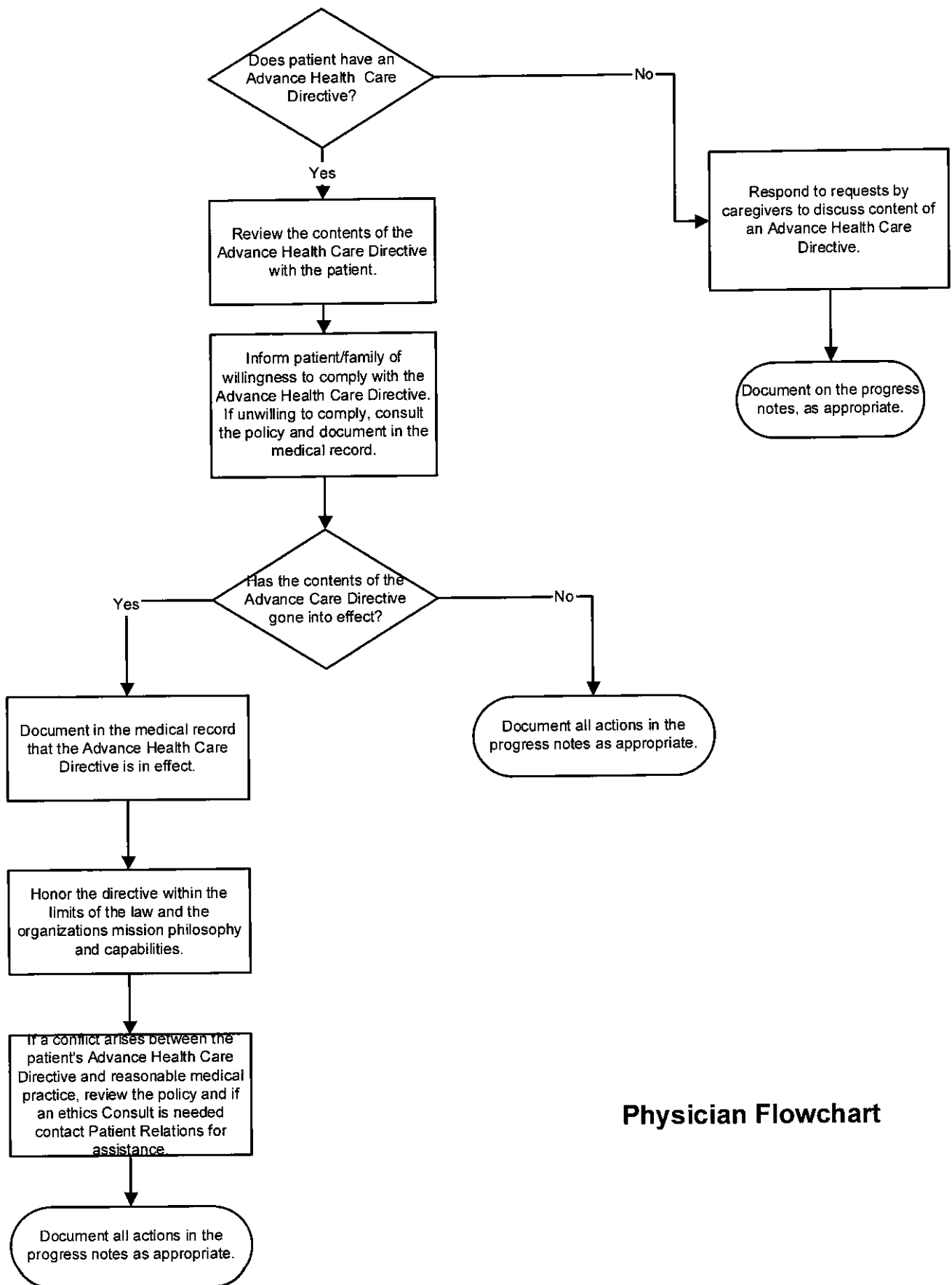
**Acute Inpatient Intake
or Perioperative
Services
Flowchart**



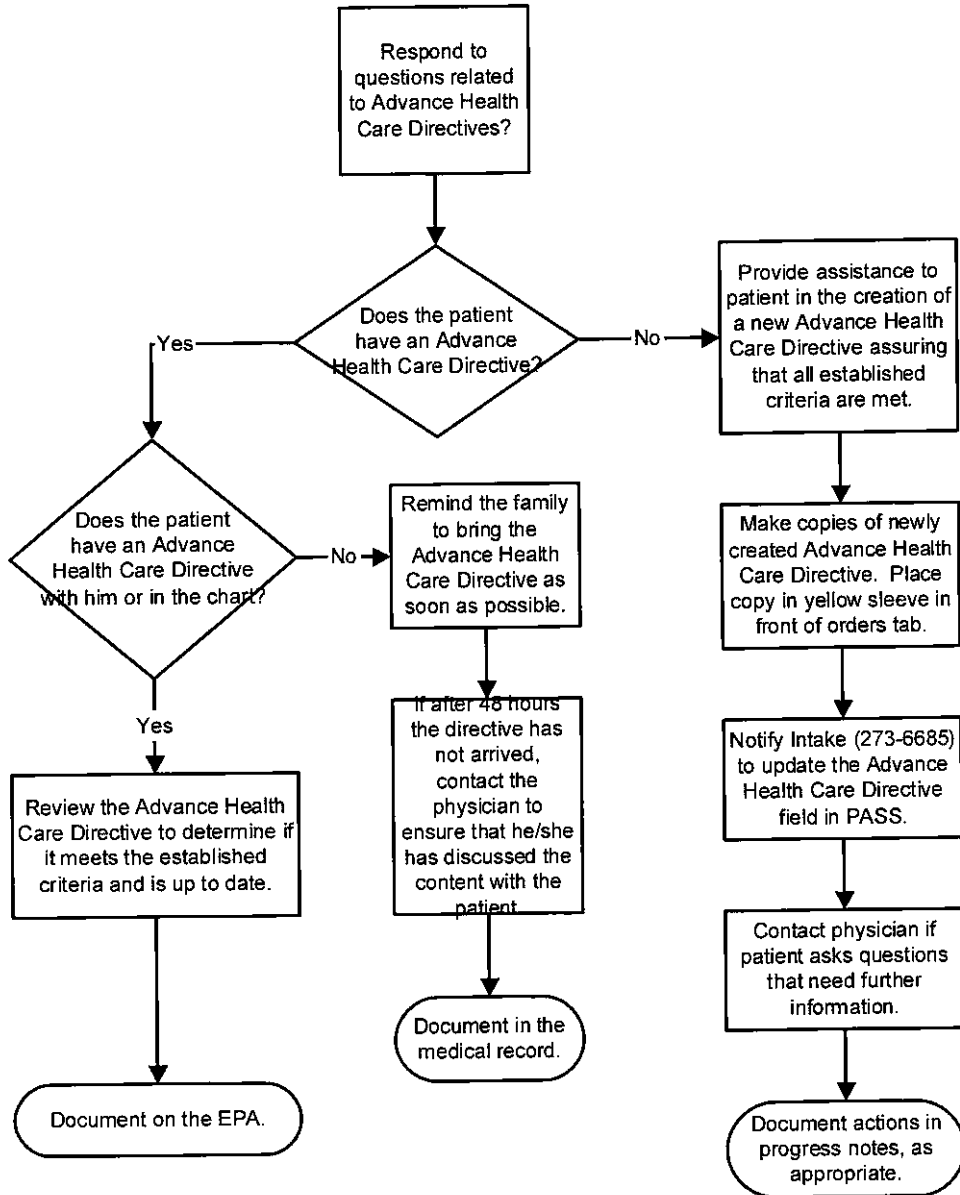
**Admitting Nurse on the Patient Care Unit
(Acute, Behavioral, Transitional)
Flowchart**



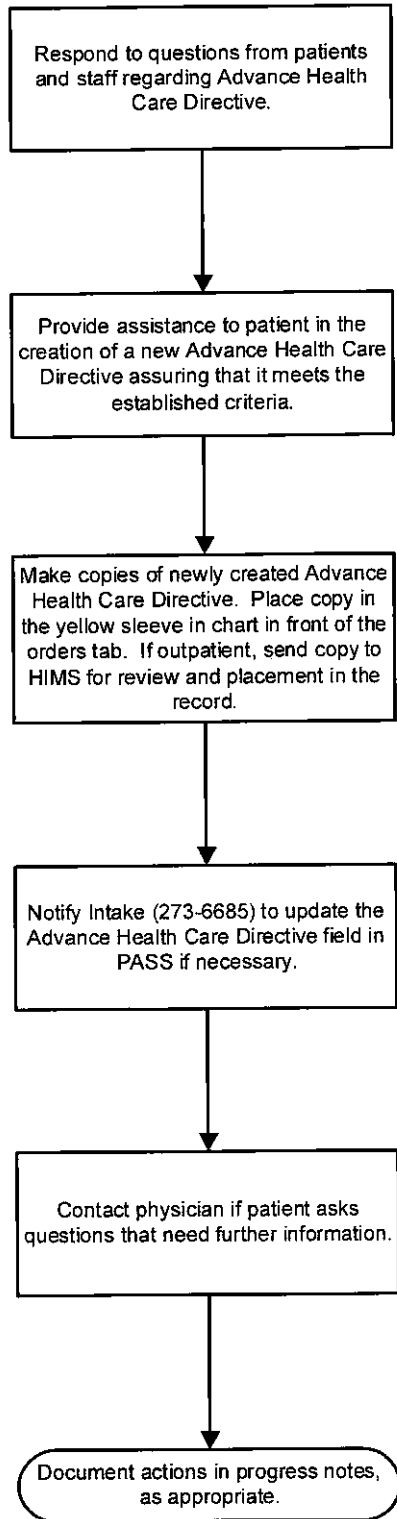
**Ambulatory Care (Rooming Staff)
Flowchart**



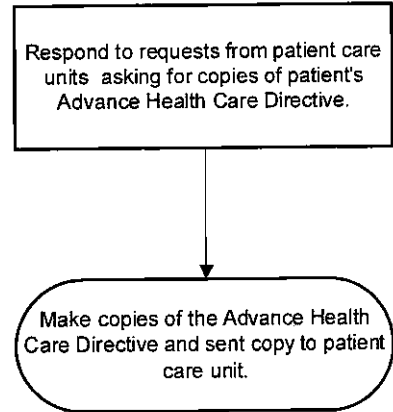
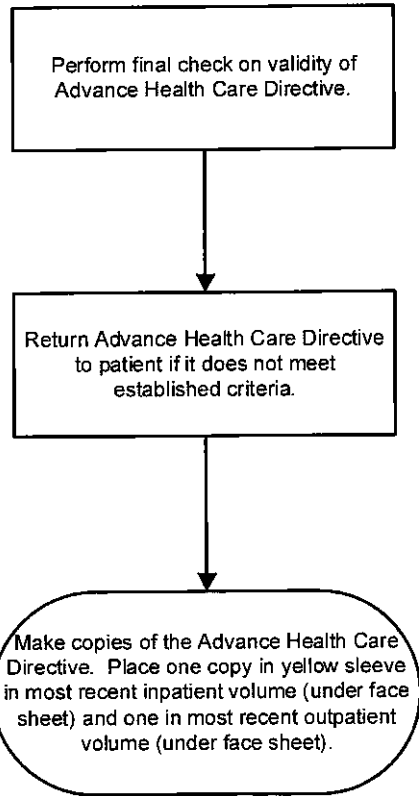
Physician Flowchart



Social Work Flowchart



**Patient Representative,
Chaplain, Nursing Supervisor
Flowchart**



**HIMS Staff
Flowchart**